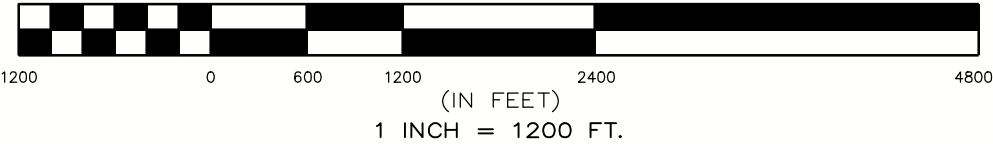
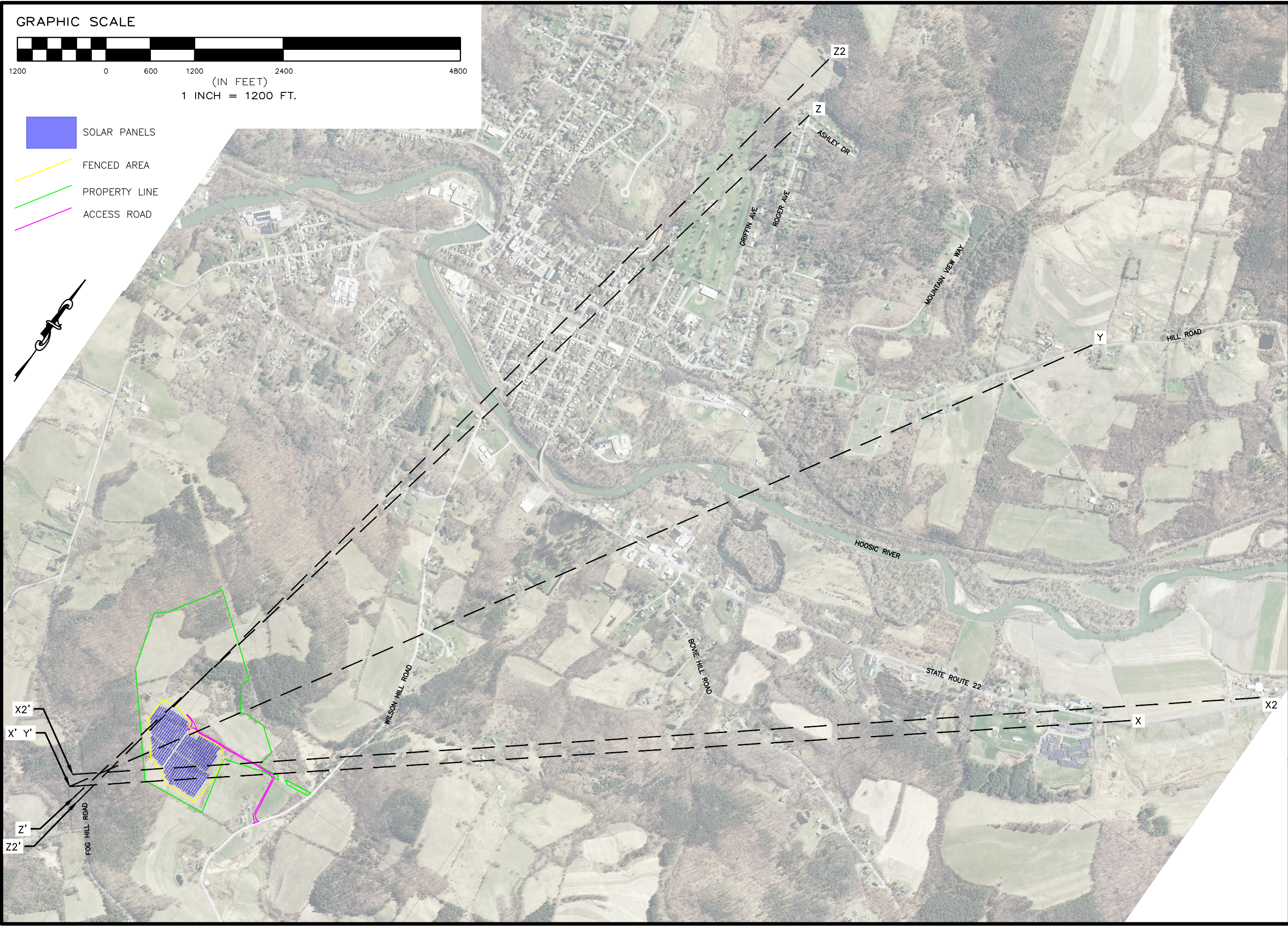


GRAPHIC SCALE



- SOLAR PANELS
- FENCED AREA
- PROPERTY LINE
- ACCESS ROAD



ENVIRONMENTAL DESIGN PARTNERSHIP, LLP.
 900 Route 146 Clifton Park, New York 12065
 (518) 371-7621
 edplp.com

VISUAL IMPACT ANALYSIS FOR
WILSON HILL SOLAR

WILSON HILL ROAD
 TOWN OF HOOSICK
 RENSSELAER COUNTY, NEW YORK

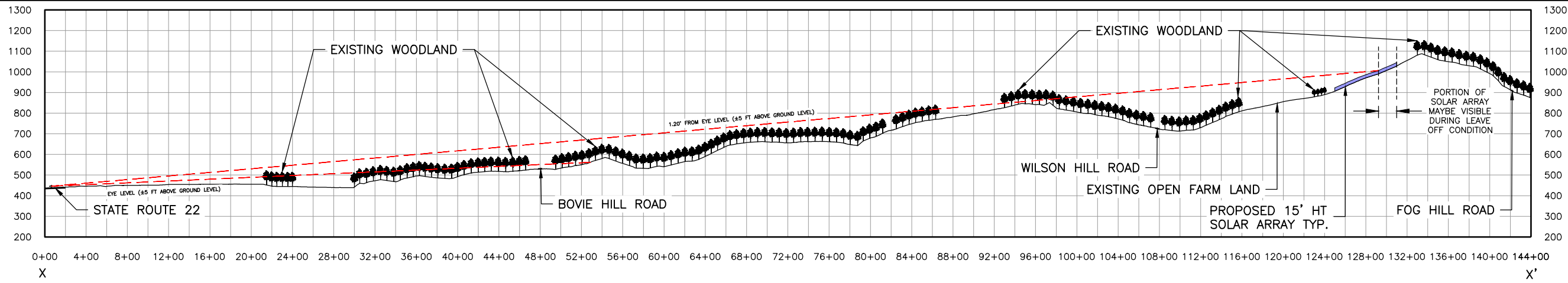
JANUARY 23, 2024

REVISION	DATE	BY
REVISED PER ZBA COMMENT	2/5/24	STA
REVISED PER PB COMMENTS	2/26/24	FR

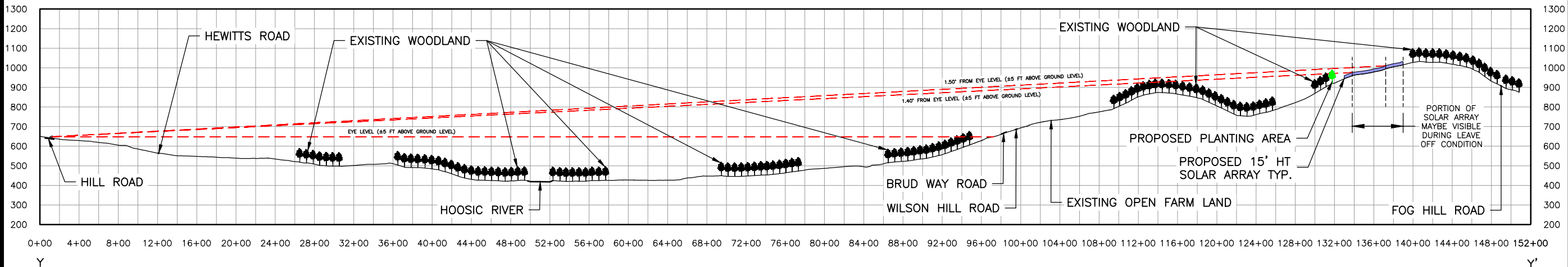
SCALE:
 1" = 1200'

SHEET TITLE:
FIGURE 1

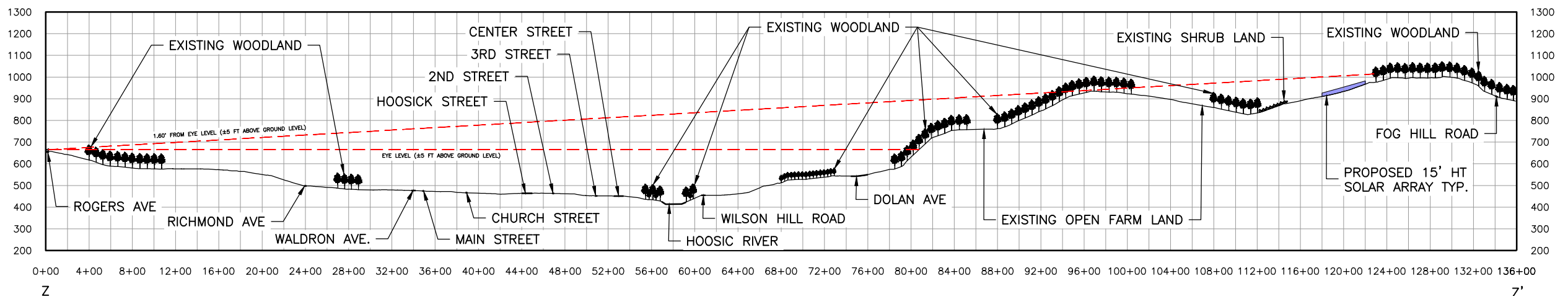
SHEET NO.
 1 of 3



CROSS SECTION X-X'

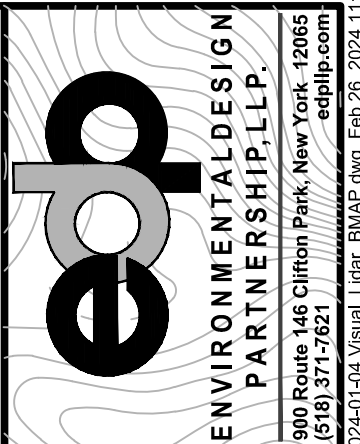


CROSS SECTION Y-Y'



CROSS SECTION Z-Z'

- DENOTES TREES THAT ARE APPROXIMATELY 70 FT IN HEIGHT
- DENOTES TREES THAT ARE APPROXIMATELY 45 FT IN HEIGHT



VISUAL IMPACT ANALYSIS FOR
WILSON HILL SOLAR

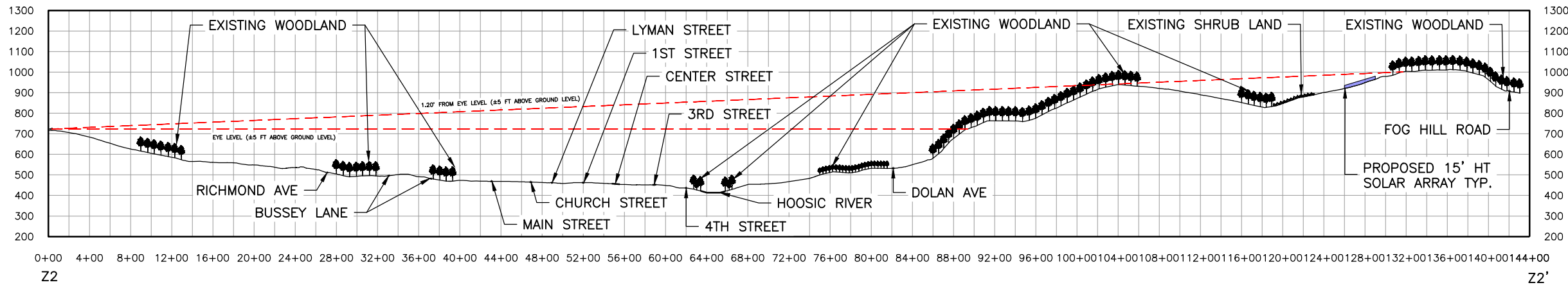
REVISION	DATE	BY
REVISED PER ZBA COMMENT	2/5/24	STA
REVISED PER PB COMMENTS	2/26/24	FR

SCALE:
1" = 1100'

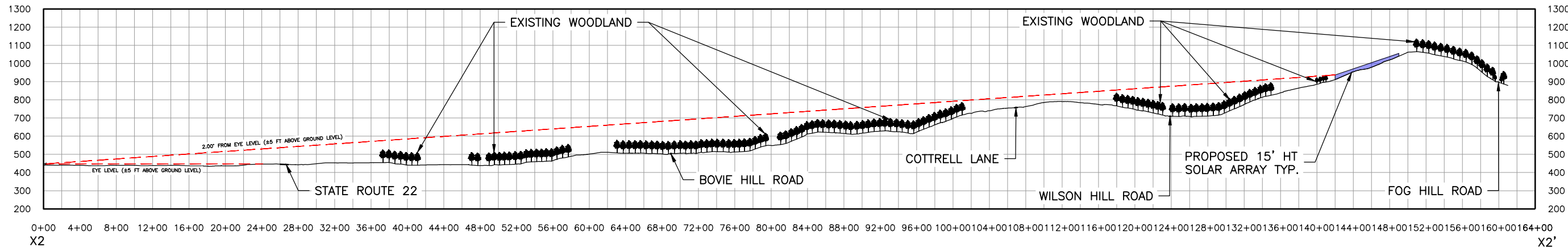
SHEET TITLE:
FIGURE 2

SHEET NO.
2 of 3

JANUARY 23, 2024
 WILSON HILL ROAD
 TOWN OF HOOSICK
 RENSSELAER COUNTY, NEW YORK
 C:\WORKFILES\Environmental Design Partnership\SharePoint Site - Documents\0 A-Z\RENSSELAER\HOOSICK\Wilson Hill Road\469 - Nexamp Solar\05-dwg\Concept\Visual Analysis\2024-01-04 Visual_Lidar_BMAP.dwg Feb 26, 2024 11:46
 edp\ip.com



CROSS SECTION Z2-Z2'



CROSS SECTION X2-X2'

- ▲ DENOTES TREES THAT ARE APPROXIMATELY 70 FT IN HEIGHT
- ◆ DENOTES TREES THAT ARE APPROXIMATELY 45 FT IN HEIGHT

VISUAL IMPACT ANALYSIS FOR
WILSON HILL SOLAR

WILSON HILL ROAD
TOWN OF HOOSICK
RENSSELAER COUNTY, NEW YORK

REVISION	DATE	BY
REVISED PER ZBA COMMENT	2/5/24	STA
REVISED PER PB COMMENTS	2/26/24	FR

SCALE:
1" = 1200'

SHEET TITLE:
FIGURE 3

SHEET NO.
3 of 3